

Installing Unsigned USB Drivers in Windows 8 / 8.1

To protect the average user, Windows 8 requires all hardware drivers have a digital signature. Windows 8 will not install a driver that does not contain a digital signature and will instead return the following vague and non-descriptive error message:

“Windows found driver software for your device but encountered an error while attempting to install it.

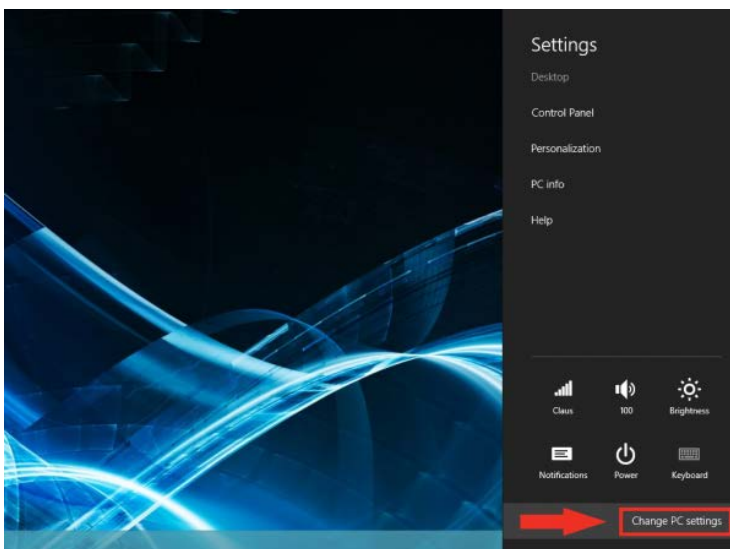
The hash for the file is not present in the specified catalog file. The file is likely corrupt or the victim of tampering.”

Microsoft now require the computer to reboot into a special “Test Mode” to install an unsigned driver:

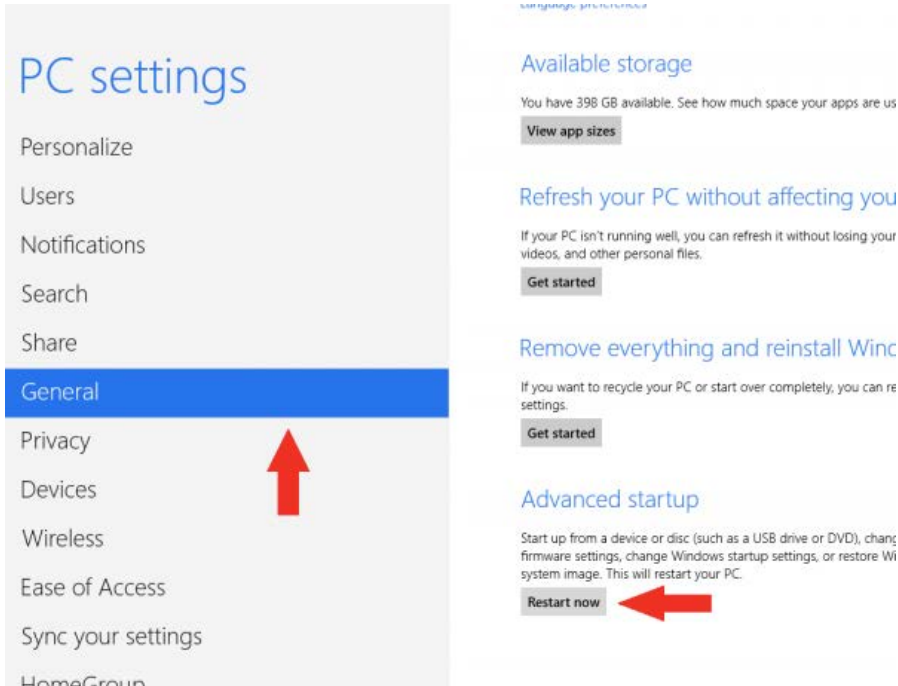
1. Install device software (BVRD2M Configurator or BVRD Microphone Configurator) and once completed, follow this procedure to install the Driver.
2. Hold down the Windows key on your keyboard and press the letter C to open the Charm menu, then click the gear icon (**Settings**).



3. Click “Change PC Settings”.

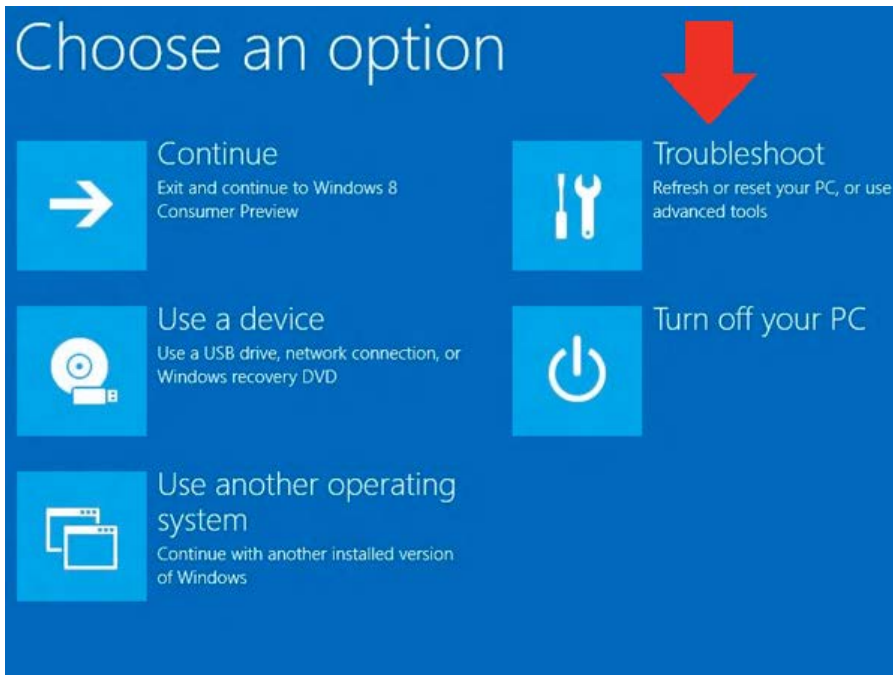


4. Click **“General”**.
5. Under **“Advanced Startup”**, click **“Restart Now”**.

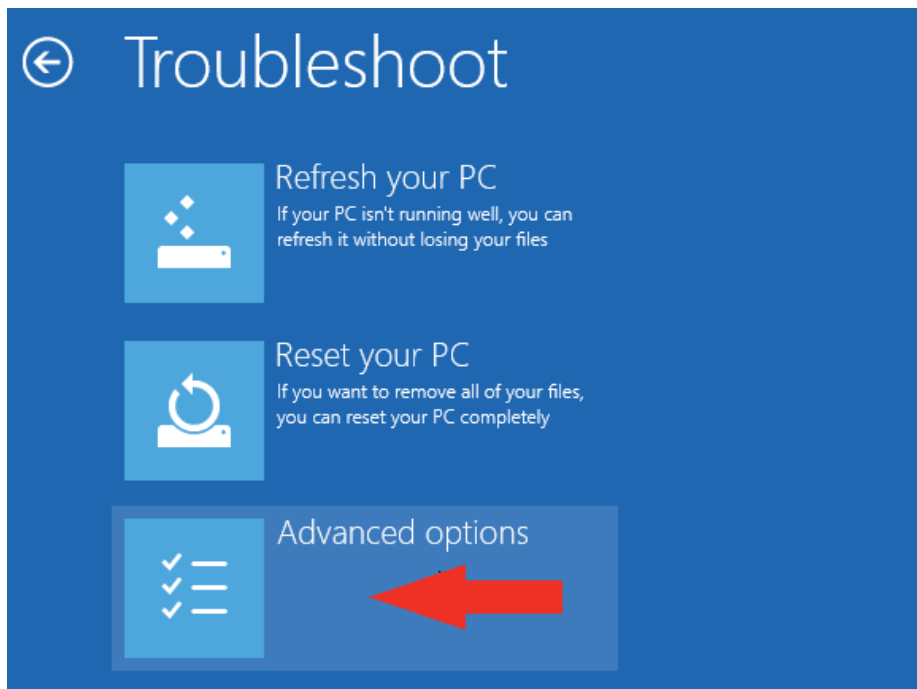


NOTE: In Windows 8.1, the ‘Restart Now’ button has moved to ‘PC Setting -> Update & Recovery -> Recovery.’

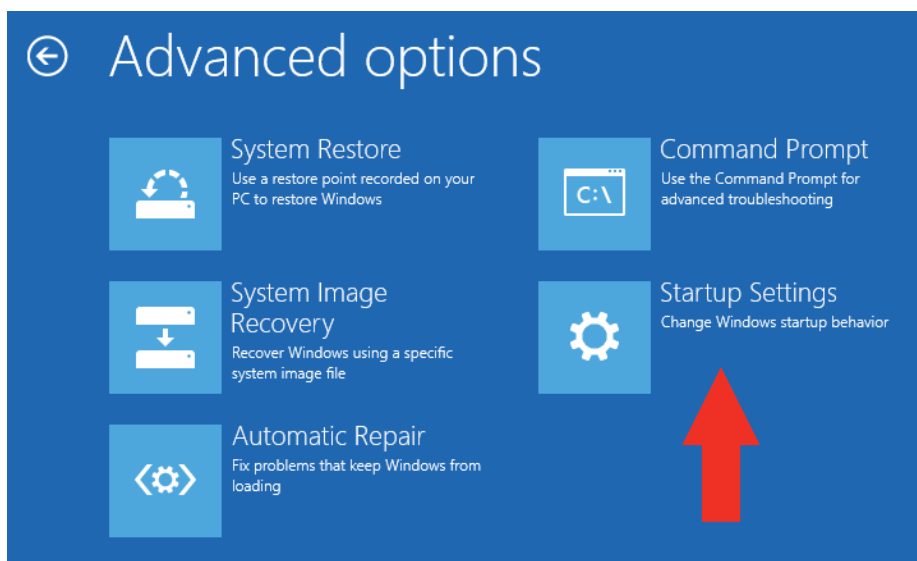
6. After restarting, click **“Troubleshoot”**.



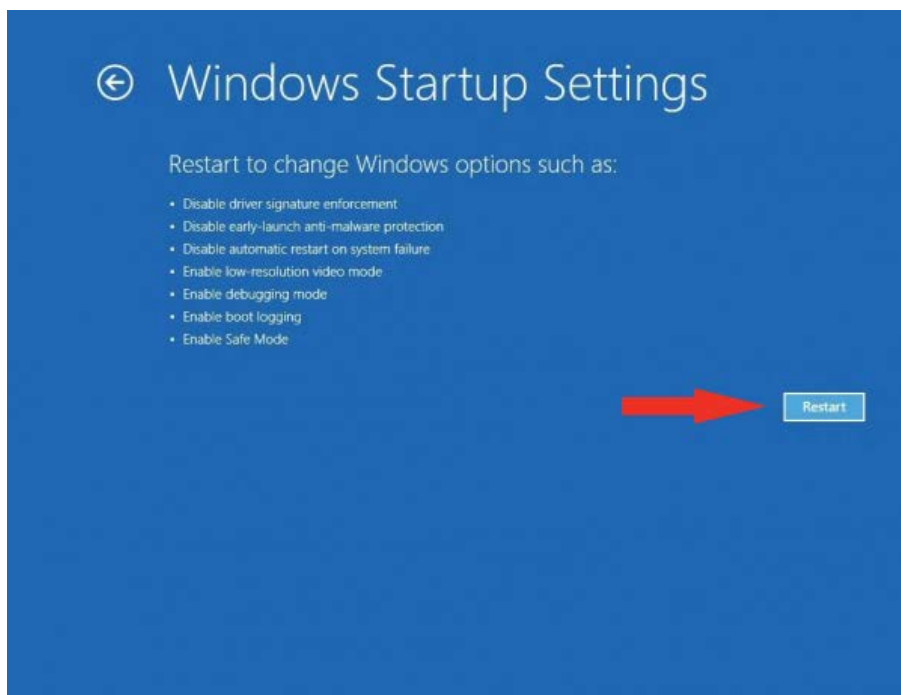
7. Click **“Advanced Options”**



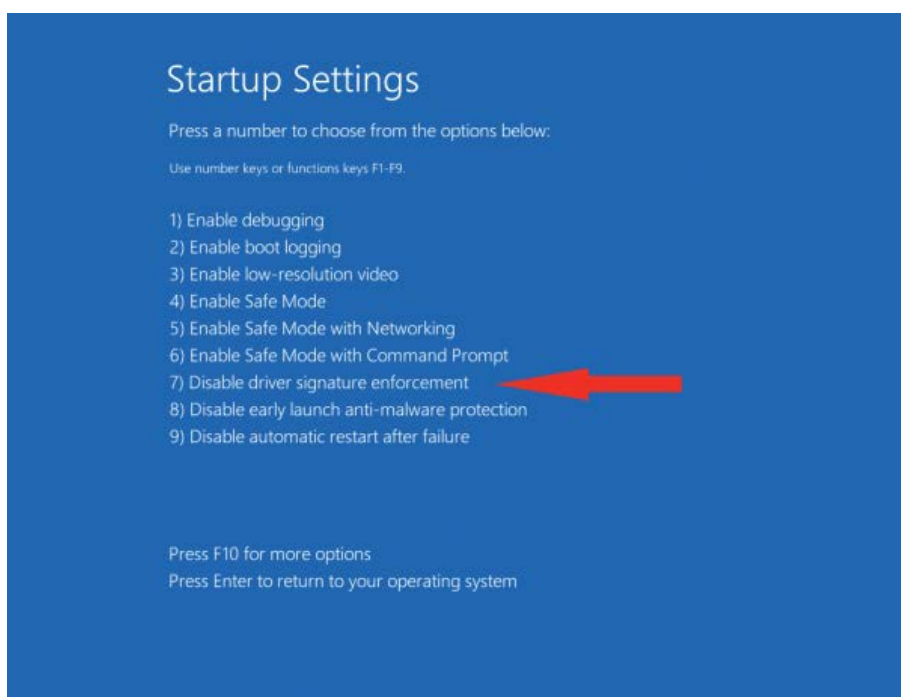
8. Click **Windows “Startup Settings”**.



9. Click **“Restart”**.

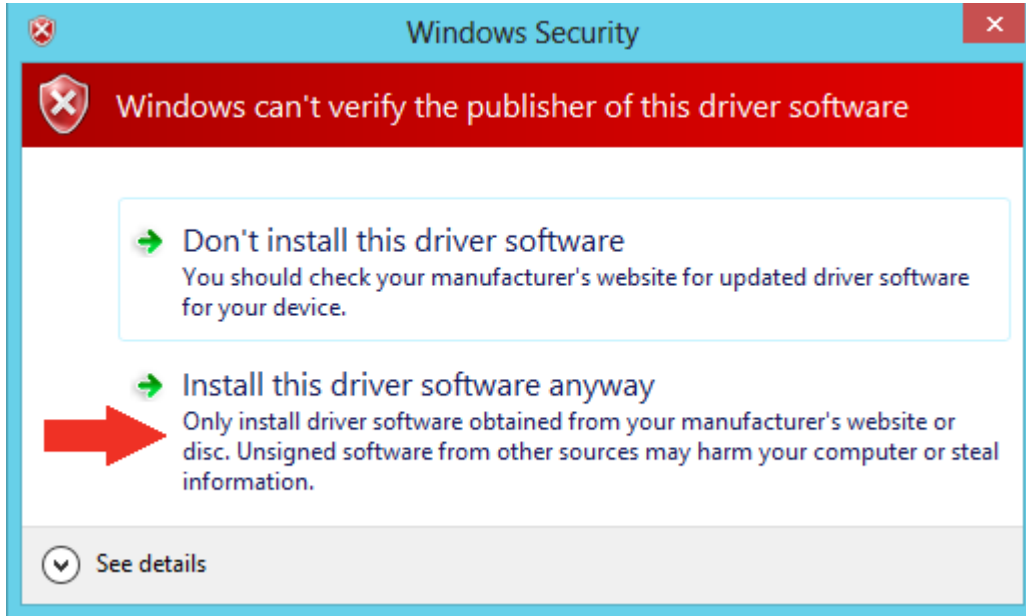


10. After restarting your computer a second time, choose **“Disable driver signature enforcement”** from the list by typing the number 7 on your keyboard.



Your computer will restart automatically.

11. After restart, connect the Device using the USB cable.
12. If the drivers are not found then locate them using Windows Explorer, located in either:
C:\Program Files (x86)\Vigil EVAS BVRD2M\USB Files (for the BVR2DM and BVRD2M4), or
C:\Program Files (x86)\Baldwin Boxall Communciations\BVRDUSB\USB Files (for the BVRD Microphones).
13. When the driver attempts to install select “**Install this driver software anyway**”.



14. After installation restart the PC and it will return to not allowing unsigned drivers.
Note: The Configuration software must be set to “Run As Administrator”.