

# OmniCALL

## SAY HELLO TO VERSATILITY

Wire it how you want to, loop and/or radial!



Patent pending: GB2605125 & EP4302472

Baldwin Boxall is excited to introduce OmniCALL the revolutionising Emergency Voice Communication (EVC) system

### Unparalleled connectivity - OmniCALL's 2-core loop & radial system

Unique 2-core loop system - patent-pending technology.

### Non-polarity dependence - Simplifying installation

Non-polarity dependent loop & radial, prevents risk of damage caused by incorrect wiring.

### Versatility at it's best - Loop & radial-wired compatibility

Loop wired & radial wired outstations possible from a single control panel.

### Extended loop distance - Simplified design & wiring

Dramatically increased distance between outstations and panels compared to other systems.

### Reduced power consumption - A step towards sustainability

Increased efficiency - embracing our sustainability goals.

### Compliance you can rely on - Advanced remote induction loop

Full adherence to industry standards ensuring optimum performance.

### Inclusive design - Standard disabled refuge remote features

Braille and luminescent text on both types of refuge outstations.

### Seamless integration - Wiring assistance alarms directly

Connect emergency assistance (toilet) alarms direct to a refuge outstation.

### Absolute flexibility - Multiple connection possibilities

Connect 1-128 outstations to a panel - in any combination.

# OmniCALL: THE FEATURES

Experience ground-breaking innovation in Emergency Voice Communication with OmniCALL's unique 2-core **LOOP** & **RADIAL** system.

## OMNICALL SYSTEM FEATURES:

- Loop and radial outstation connection on the same system
  - Loop connection
    - 2 core
    - Polarity not important
    - 32 outstations per loop
  - Radial connection
    - 2 core
    - Polarity not important
- Same outstation for loop or radial connection
- Assistance alarms connect direct to outstations
  - Each assistance call is a separate address
- Designed for BS5839-9 and BS8893 compliance
- Patent pending

## MASTER STATION FEATURES:

- Flexible outstation connection
  - 4 (expandable to 16) radial outstation connections
  - 32 (expandable to 128) loop outstation connections
- One loop/radial card included
  - 3 additional line slots available
    - 32 loop / 12 radial
    - 64 loop / 8 radial
    - 128 loop / 10 radial
- Internal backup batteries for up to 32 outstations
  - Expandable up to 128 with additional battery enclosure
- 5" full colour TFT display
  - Customisable outstation layout
  - Active call list
  - Live faults view
  - Time & date stamp activity & fault logs
  - Self-describing faults
  - Individual icon per outstation type
  - Two lines of free text fields per outstation
- Delayed call output
  - Interface to third party equipment
  - Interface to remote lamp buzzer
- Up to 5 way conference call
- Paging option
  - Broadcast to the loudspeaker of all 'occupied' refuge outstations and all telephones
- Outstation call option
- Economical 'key & lamp' 8 way master station available

## FIRE / EMERGENCY / STEWARD TELEPHONE (TYPE A) OUTSTATION FEATURES:

- Red, green, stainless steel and custom finishes available
- Push door or slot lock options
- Luminescent labelling
- Loop or radial connection
- Induction loop
- Assistance alarm connection direct to outstation
  - Separate indication on master station
- Monitored external beacon option

## REFUGE (TYPE B) OUTSTATION FEATURES:

- Standard double-gang backbox installation
  - Flush
  - Plasterboard
  - Surface
- Green, stainless steel and custom finishes available
- Braille
- Luminescent labelling
- Loop or radial connection
- Assistance alarm connection direct to outstation
  - Separate indication on master station

## ADVANCE REFUGE (TYPE B) OUTSTATION FEATURES:

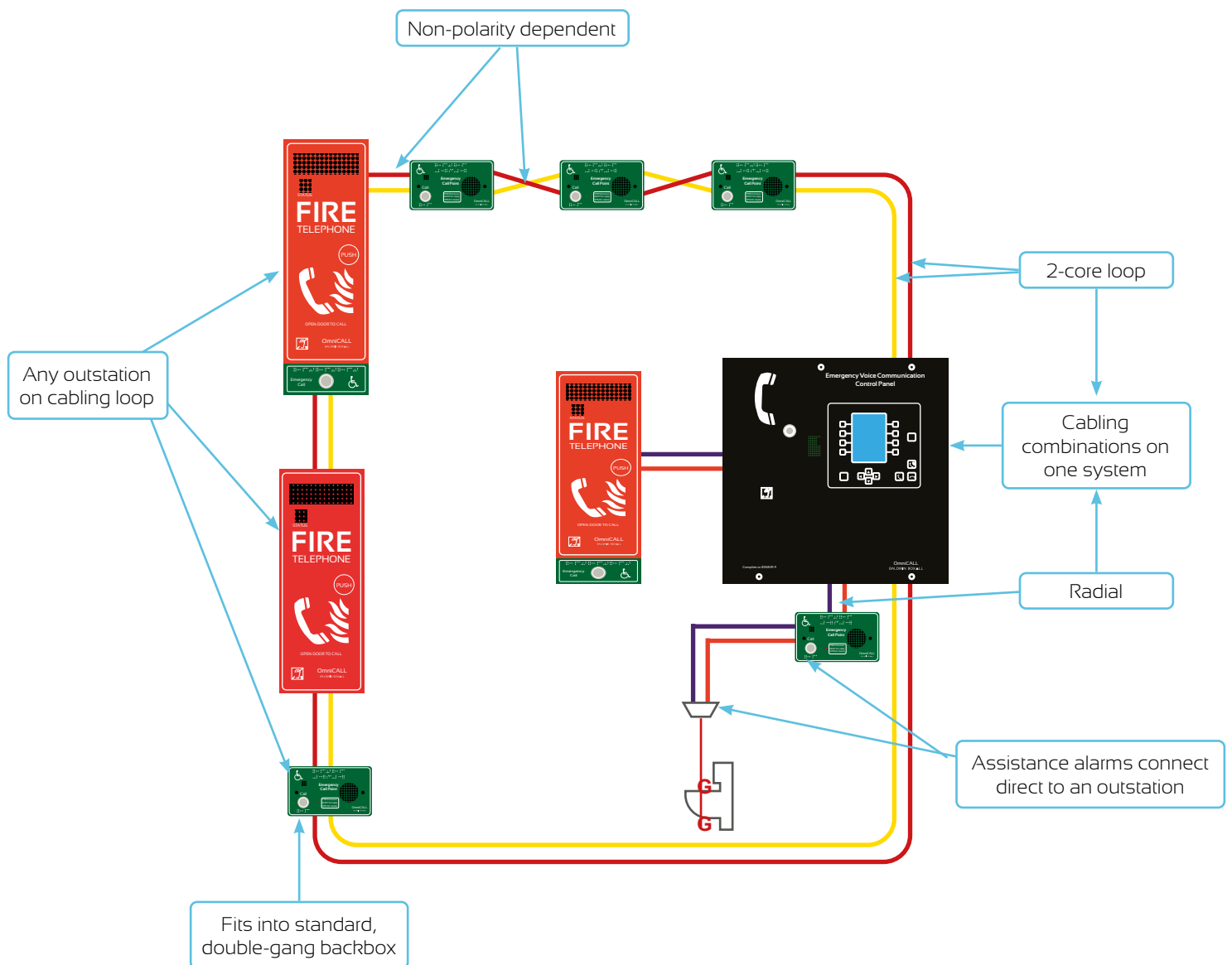
- Green finish
- Braille
- Luminescent labelling
- Loop or radial connection
- Induction loop
- Assistance alarm connection direct to outstation
  - Separate indication on master station

## COMBINED EMERGENCY TELEPHONE / REFUGE (TYPE C) OUTSTATION FEATURES:

- Red, green, stainless steel and custom finishes available
- Push door or slot lock
- Braille
- Luminescent labelling
- Loop or radial connection
- Induction loop
- Assistance alarm connection direct to outstation
  - Separate indication on master station
- Monitored external beacon option

Contact Us +44 (0) 1892 664422

# OmniCALL: THE BENEFITS



## Easy Master Station Operation

- 5" full colour TFT display
- Individual icon per outstation type
  - Fire telephone
  - Steward telephone
  - Refuge outstation
  - Combined outstation
  - Assistance alarm
- Free text fields per outstation
  - 2 lines
  - Name
  - Location

## Reduced installation costs

- 2 core
- Loop or radial connection
- Polarity not important

## Easy fault finding

- Self-describing faults
- 2 core loop
- Polarity not important

## Easy repair

- Same outstation - loop or radial

## Easy commissioning

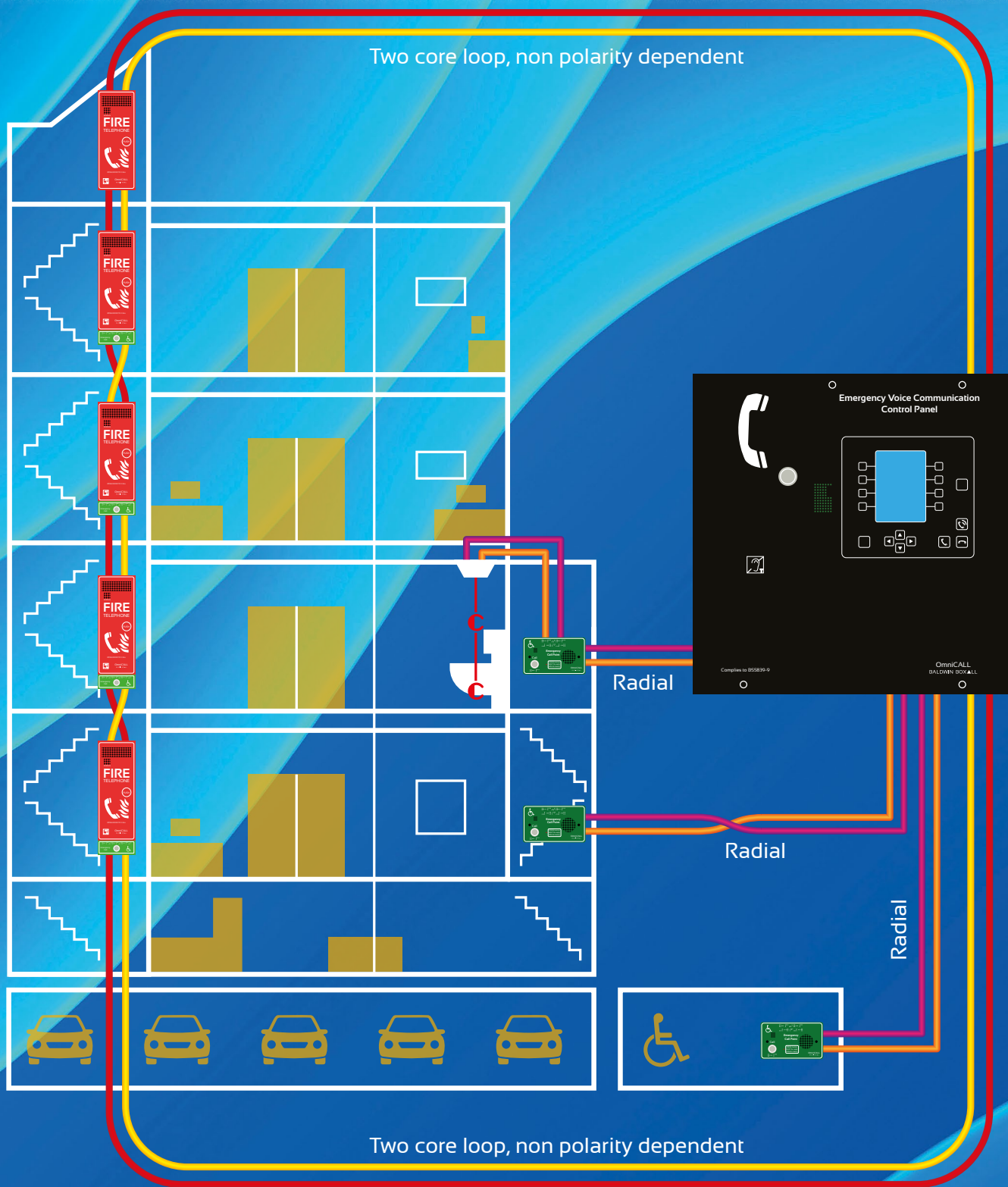
- 5" full colour TFT display
- Self-describing faults

## Ready for BS8893 compliance

## Designed for BS5839-9 compliance

## Re-use existing cabling

## Retrofit options available on request



## Preliminary datasheet



**BALDWIN BOXALL**  
LEADING THE WAY TO SAFETY

Baldwin Boxall Communications Ltd  
Wealden Industrial Estate, Farningham Road,  
Crowborough, East Sussex, TN6 2JR, United Kingdom  
T: +44 (0) 1892 664422  
E: [hello@baldwinboxall.co.uk](mailto:hello@baldwinboxall.co.uk)  
W: [www.baldwinboxall.co.uk](http://www.baldwinboxall.co.uk)