

## Download the fault & activity logs on a PA/VA system

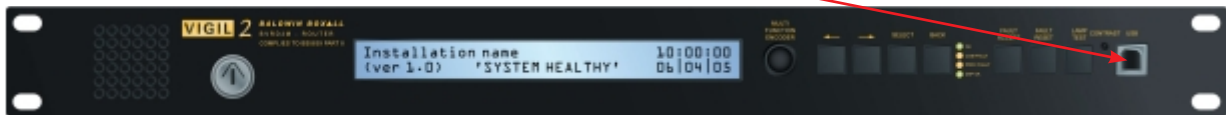
<b>Product Range:</b>	VIGIL2
<b>Product Code (if applicable):</b>	BVRD2M / BVRD2M4 / Config software
<b>Description of activity:</b>	Downloading and saving fault and activity logs
<b>Description of likely fault(s):</b>	N/A

### IMPORTANT - this product forms part of a life-safety system

Please Note: Periodic inspection and servicing needs to be carried out by a competent person with specialist knowledge of VASs, relevant current training and experience, and with adequate access to spares and sufficient information regarding the system. (BS5839-8).

### Description of rectification works:

1. Open up Baldwin Boxall Config software on your laptop.
2. When fully open, connect laptop to router via front USB port.



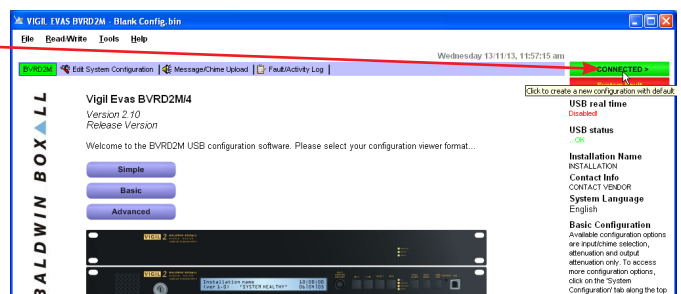
3. Depending on set up, at some point an access code (PIN) may be asked for. This is 5555.



4. Confirm access level change.

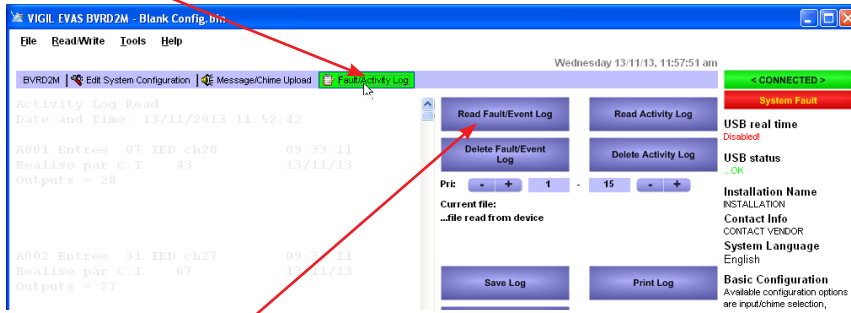


5. After connection the software will automatically read the existing Config file. 'Connected' will appear here in green.



<b>Author:</b>	
<b>Approved by:</b>	Tom Holder
<b>Date:</b>	

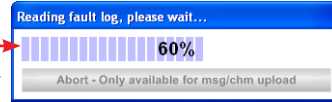
6. Select the 'Fault Activity Log' tab.



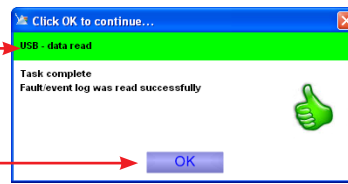
7. Click on the 'Read Fault/Event' button.

8. The following screen images will be displayed

during

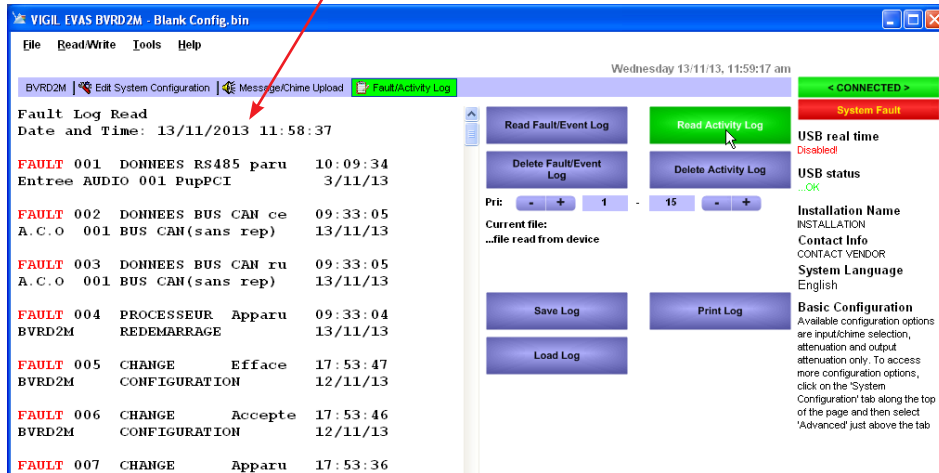


and after

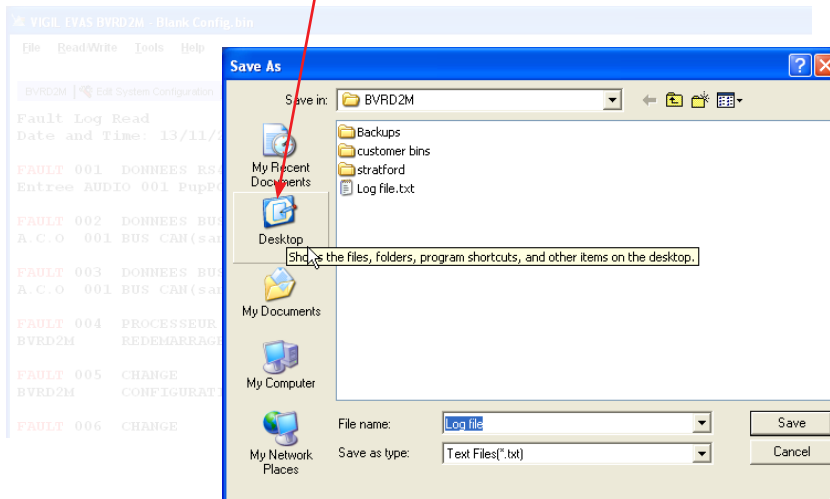


9. ... a successful read. Then, click OK

10. The Fault/Event Log will now be viewable on screen

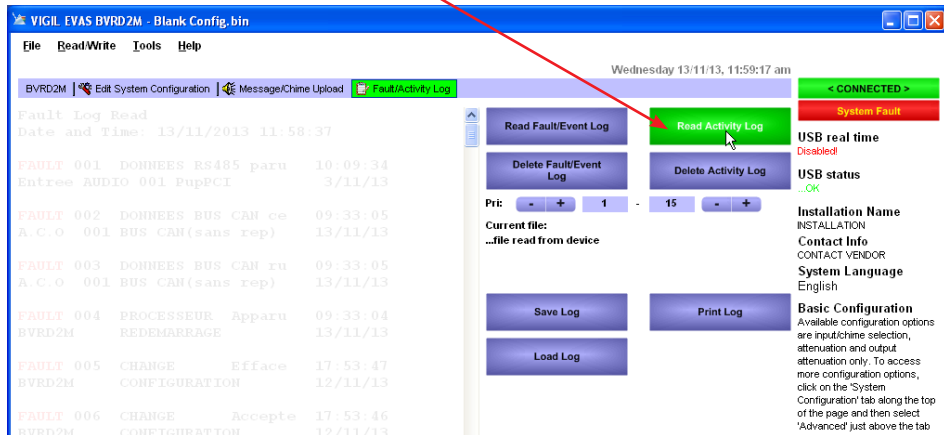


11. Save the log (.txt file) to the laptop desktop

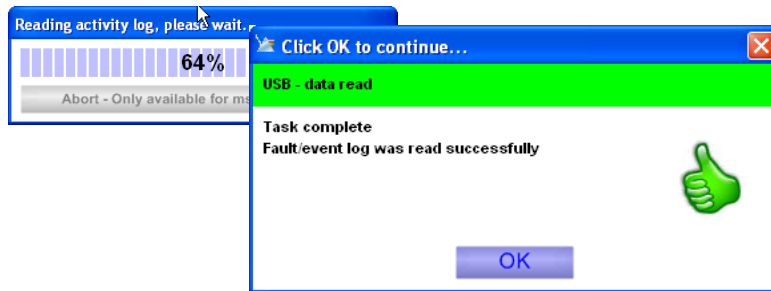


**Saved files will need to be named along the lines of: 'BB (site name) Fault Log'**

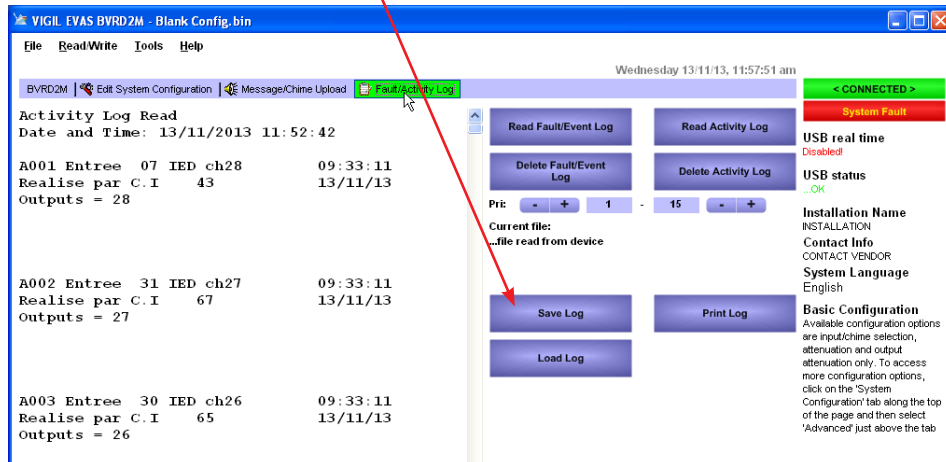
12. Repeat 'read and save' process for Activity Log



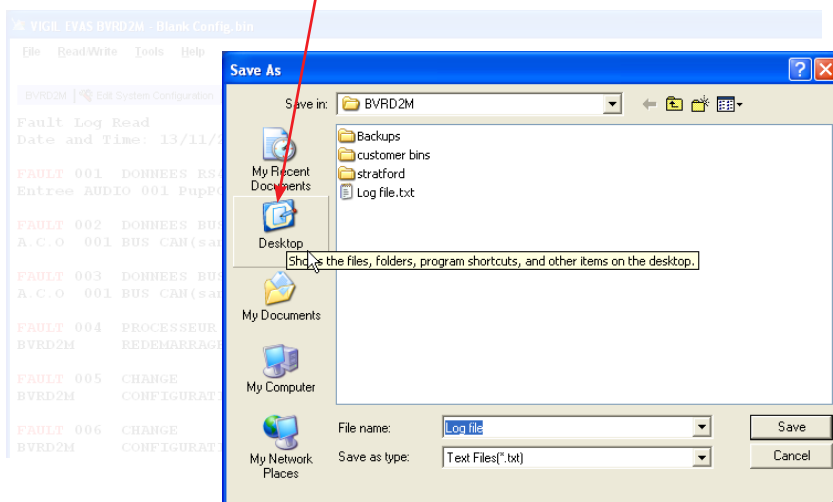
13. The same on screen progress images will appear



14. The log will be viewable on screen. Save log (txt file).

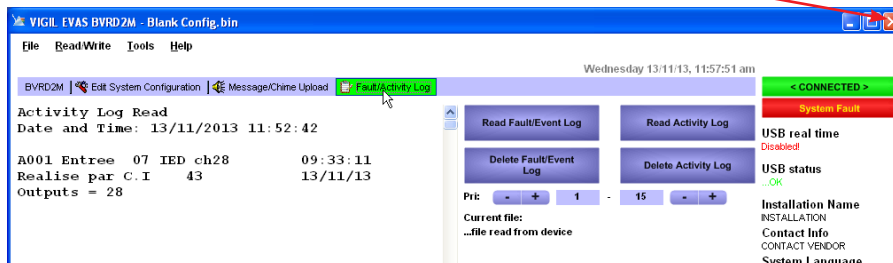


15. Save the Activity Log (.txt file) to the laptop desktop

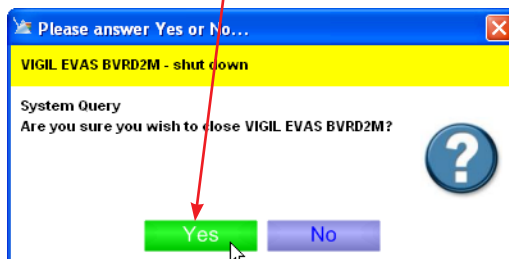


**Saved files will need to be named along the lines of: 'BB (site name) Activity Log'**

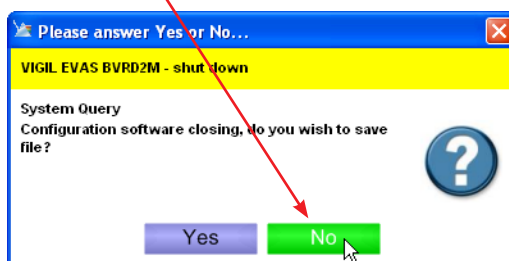
16. Once both files are downloaded and saved, the program can be closed



17. Confirm that you wish to shut down the Config software



18. Confirm that you DO NOT wish to save changes



19. Once complete, disconnect the laptop from the router by removing the USB lead.

#### For further help:

**Manuals & Guides:** technical manuals, installation guides and more are available for download on our website: [baldwinboxall.co.uk/downloads](http://baldwinboxall.co.uk/downloads).

**Telephone:** technical help line (0)1892 664422 (then press 3 for after sales technical help).

**Training:** we hold a range of courses at different levels for engineers. To find out more, or place a booking, please visit our website: [baldwinboxall.co.uk/training](http://baldwinboxall.co.uk/training) or contact Carol @[baldwinboxall.co.uk](mailto:baldwinboxall.co.uk).



**BALDWIN BOXALL**  
LEADING THE WAY TO SAFETY

Baldwin Boxall Communications Ltd  
Wealden Industrial Estate, Farningham Road,  
Crowborough, East Sussex, TN6 2JR, United Kingdom

T: +44 (0) 1892 664422 F: +44 (0) 1892 663146  
E: [mail@baldwinboxall.co.uk](mailto:mail@baldwinboxall.co.uk)  
W: [www.baldwinboxall.co.uk](http://www.baldwinboxall.co.uk)