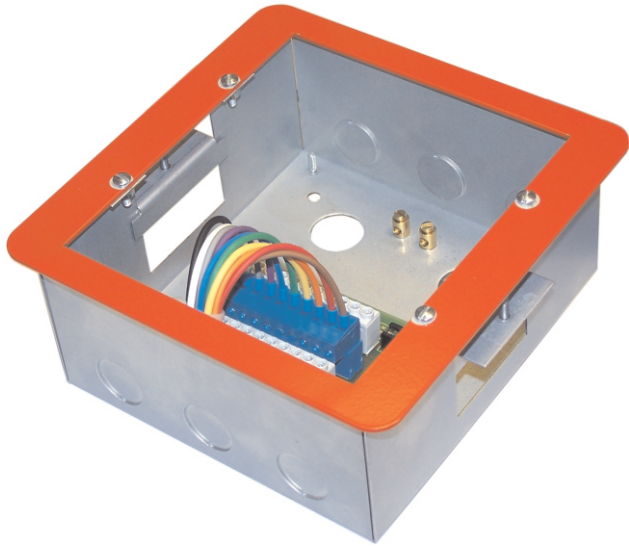


BVCRFB Plasterboard Back Box with Termination PCB



Installation Instructions

BALDWIN BOXALL
COMMUNICATIONS

Testing Loop Cables

To prevent damage to Remote Units it is strongly recommended to check the site cabling PRIOR to applying power to the loop. The Termination Board provides a simple method to check cabling as the "Test" connector provides a loop-through function.

CAUTION: If there are Slave Control panels or other types of remote unit (without the termination board) on the loop ensure the Loop IN & OUT connections are linked together and the units are NOT CONNECTED to the loop cabling.

- 1) Ensure all DRS Back boxes on the loop have the flying lead connected to the "TEST" connector.
- 2) Ensure there is continuity on each conductor between the two ends of the loop.
- 3) Ensure there are no shorts to earth on any of the conductors.

OmniCare DRS Plasterboard Back box

This Back Box is fitted with a Termination PCB to allow site cabling to be terminated and tested prior to connecting the Remote Unit or Repeater.

To ensure the Remote Unit is not damaged by incorrect site cable termination please ensure the following information is understood and the recommended tests are completed before connecting the Remote Unit.

The reverse of this instruction sheet includes a template of the mounting holes.

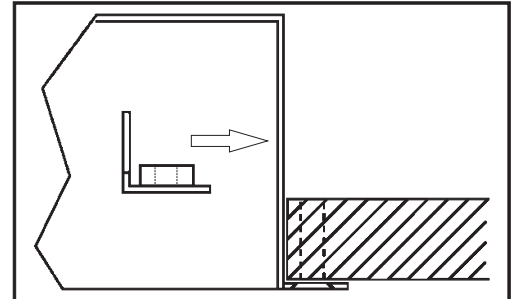
All loop cabling should be 4 core with screen enhanced fire rated cable.
We recommend the colour coding of the loop cables should be as follows:

Blue: 0V
Brown: +V
Grey: CAN H
Black: CAN L
GND: Terminals on Back Box

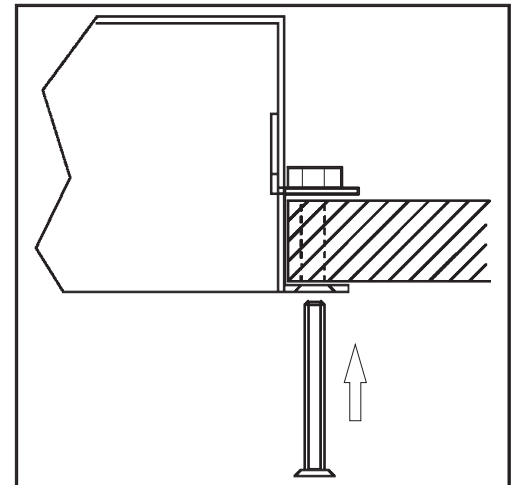
After terminating the site cabling ensure the Blue Block with Flying Lead is plugged into the "TEST" connector on the Termination board.

Mounting the Backbox

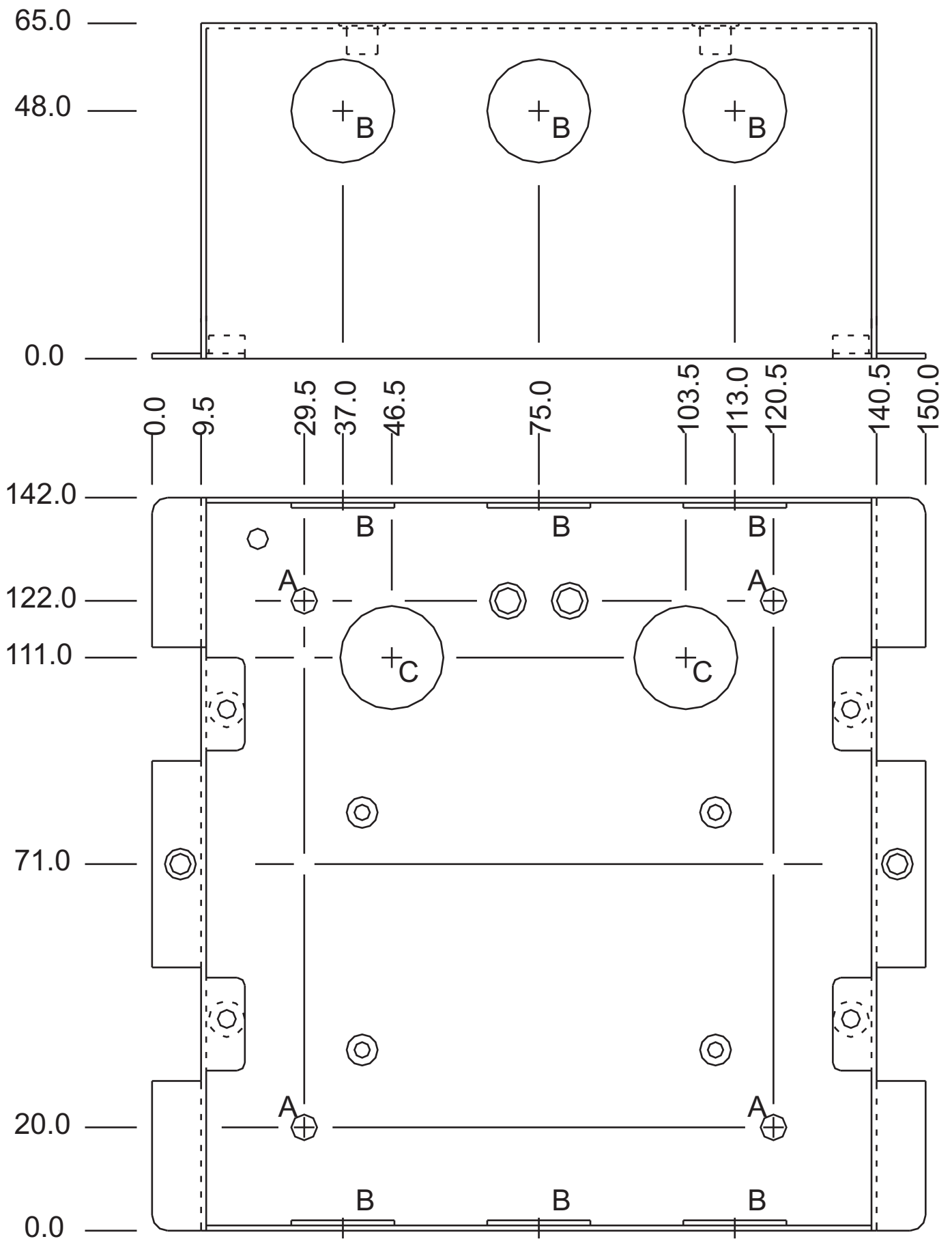
1) Cut a suitable hole in the plasterboard.



2) Place the backbox in the hole and line up the mounting brackets with the cutouts in the side plates.



3) Secure the brackets through the plasterboard with M3 screws.



A: 5.0mm DIA. 4 HOLES.
 B: 20mm KNOCKOUTS. 6 OFF.
 C: 20mm DIA. 2 HOLES.

Backbox Mounting Template