

Volume Controls

These volume controls are designed to attenuate the signal fed to loudspeakers driven by the 100 volt line output of a public address amplifier.



BVC6

The volume control is fitted into a single surface box and can be used with any number of loudspeakers provided the load does not exceed 6 Watts. The control has 9 steps of 3dB. The knob is fully rotating.

A volume restoration relay is fitted. This enables the volume control to be over-riden when required. Used when announcements and warnings must be heard at full volume irrespective of the setting of the volume level.



BVC100

The volume control is fitted into a double gang surface mounting box and can be used with any number of loudspeakers provided the load does not exceed 100 Watts. The control has 9 steps of 3dB. The knob is fully rotating.

A volume restoration relay is fitted and operates in the same way as the BVC6.

Operating and Installation Instructions

Connections

All internal components are mounted on the back of the front panel, and connections are made via a socket connector which is a push fit onto pins on the circuit board. As the connector can be mounted either way round, the terminals are marked on the circuit board and should be wired as follows:

- 'IN' 100 volt line input, from amplifier
- 'OUT' output to speakers
- 'PAGE' 100 volt line 'page' / 'emergency' from dedicated paging amplifier (if no such amplifier is available, strap 'PAGE' to 'IN')
- 'RLY' 24 volt DC to energise relay (see Fig. 1)

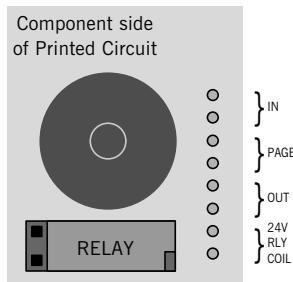


Figure 1. Showing relay in the 24V to over-ride position.

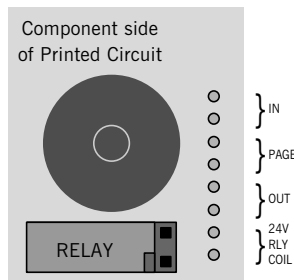


Figure 2. Showing relay in the OV to over-ride position.

Voice restoration relay.

It is normally fitted as shown in Fig. 1, so that 24 volts DC applied to the 'RLY' terminals on the circuit board causes the volume control to be by-passed.

For special applications this mode of operation may be reversed so that removal of 24 volts initiates volume restoration. Should the unit be required to operate in this mode the relay must be removed from its socket and replaced in the alternative position as shown in Fig. 2. To do this proceed as follows:

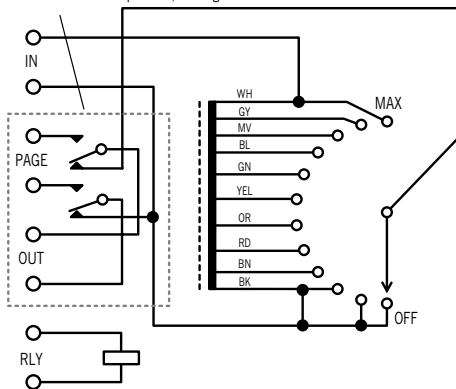
1. Remove panel assembly from the back box and remove the control knob with a small screwdriver.
2. Undo the switch retaining nut and separate the module from the front panel.

3. The relay has eight pins which are easily bent, so carefully withdraw it from its socket by pulling vertically away from the circuit board.
4. Keeping the relay the same way round relative to the socket, move it to the position shown in Fig. 2, align the pins and press home firmly.
5. Reassemble the unit taking care not to forget the shakeproof washer fitted between the switch and the front panel and also not to strip or cross thread the plastic thread of the switch bush. Refit the knob.

WARNING

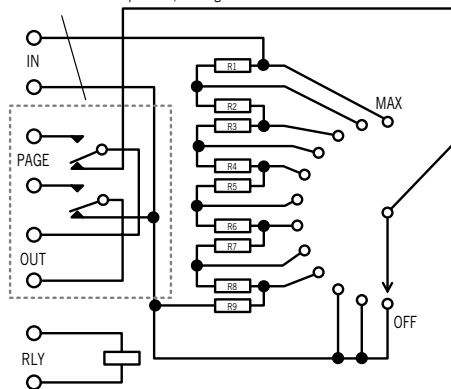
Ensure that mains voltages can never become present within the unit.

Voice restoration relay is shown in the 24V over-ride position, see Fig. 1.



BVC100

Voice restoration relay is shown in the 24V over-ride position, see Fig. 1.



BVC6

BVC6

R1	680	4w
R2	680	4w
R3	680	1w
R4	680	0.5w
R5	680	0.5w
R6	680	0.5w
R7	220	0.25w
R8	220	0.25w
R9	220	0.25w



Low Voltage Directive
73/23/EEC as amended
by 93/68/EEC

EMC Directive
89/336/EEC as amended
by 92/31/EEC and 93/68/EEC

Applies only when the items are correctly fitted and operated in or with products of our manufacture.

For further information and specific system design, please contact our sales department at the address below.

Baldwin Boxall Communications Ltd

Wealden Industrial Estate
Farningham Road
Crowborough
East Sussex TN6 2JR

Telephone: 01892 664422
International: +44 1892 664422
Fax: 01892 663146
International: +44 1892 663146
Email: mail@baldwinboxall.co.uk
Web Site: www.baldwinboxall.co.uk

BALDWIN BOXALL

COMMUNICATIONS

